

THE FERRUM RANGE

Excellence in Metal
Roofing & Cladding

info@mrc-group.co.za
www.mrc-group.co.za



EXCELLENCE IN CONSTRUCTING PERIMETER DETAILING - SIDEWALL



EXCELLENCE IN CONSTRUCTING A SIDEWALL DETAIL:

The purpose of a sidewall flashing is to complete the intersection between the roof and wall up-stand and to seal the building against water penetration. For a sidewall flashing to be effective, it must be durable, low-maintenance, weather resistant, compatible with adjoining materials, and also able to accommodate thermal movement.

The complete construction of the sidewall detail must prevent direct and wind driven water from entering the building and close off the insulation void. All sidewall flashings must be fixed to the independent zed support and be closed off with a separate metal counter flashing.

MRC Group's commitment to excellence in perimeter detailing is backed with the unrivalled single source 'Guardian' System Warranty that covers design, materials, installation & maintenance for the term of the roofing and cladding system.

ESSENTIAL KEY COMPONENTS:

-  METAL BARGE FLASHING WITH FASTENERS
-  SEALANT TAPE BETWEEN THE RIB AND THE ZED
-  METAL COUNTER FLASHING WITH ANGLED RETURN
-  FLASHING TO BE FIXED TO THE INDEPENDENT ZED

Please note it is essential that **ALL** components are installed correctly to withstand the impact from wind driven rain and to stop water ingress

JOHANNESBURG – DURBAN – CAPE TOWN

For project specific specifications, CAD Details, Samples or technical assistance please contact our technical department on +27 (0) 861 672 476 or refer to our Technical Brochure available on www.mrc-group.co.za

All Information correct as of the date this document was created 01 April 2015.

© Copyright 2015 MRC GROUP Copying or reproduction of these material are strictly prohibited

Reference number: MRC/FR/SF/PDS/BU/001

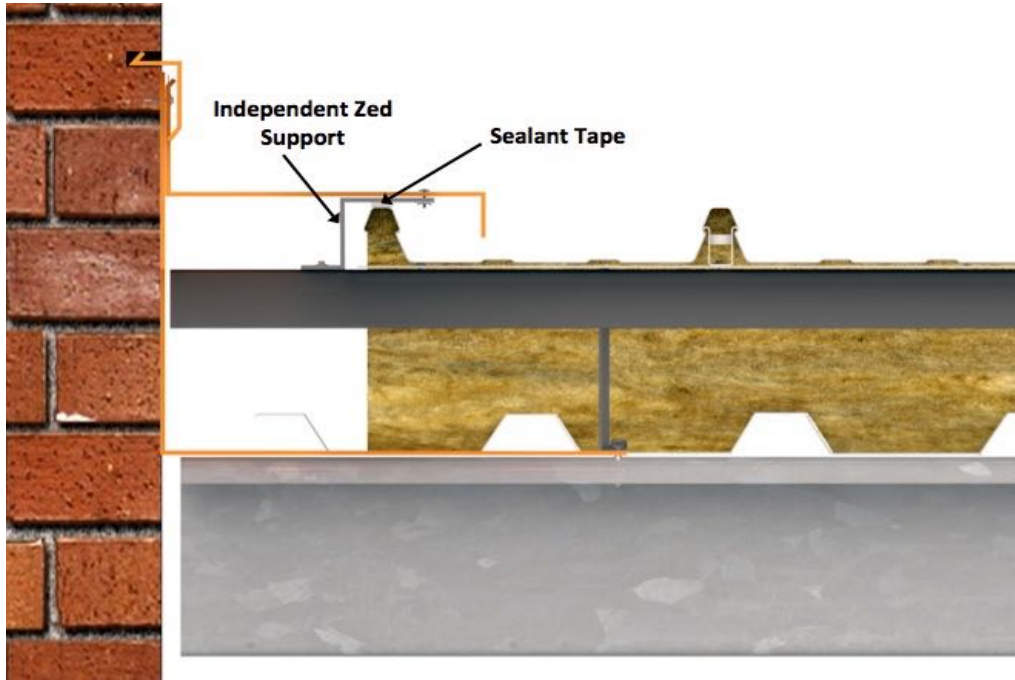
THE FERRUM RANGE

Excellence in Metal
Roofing & Cladding

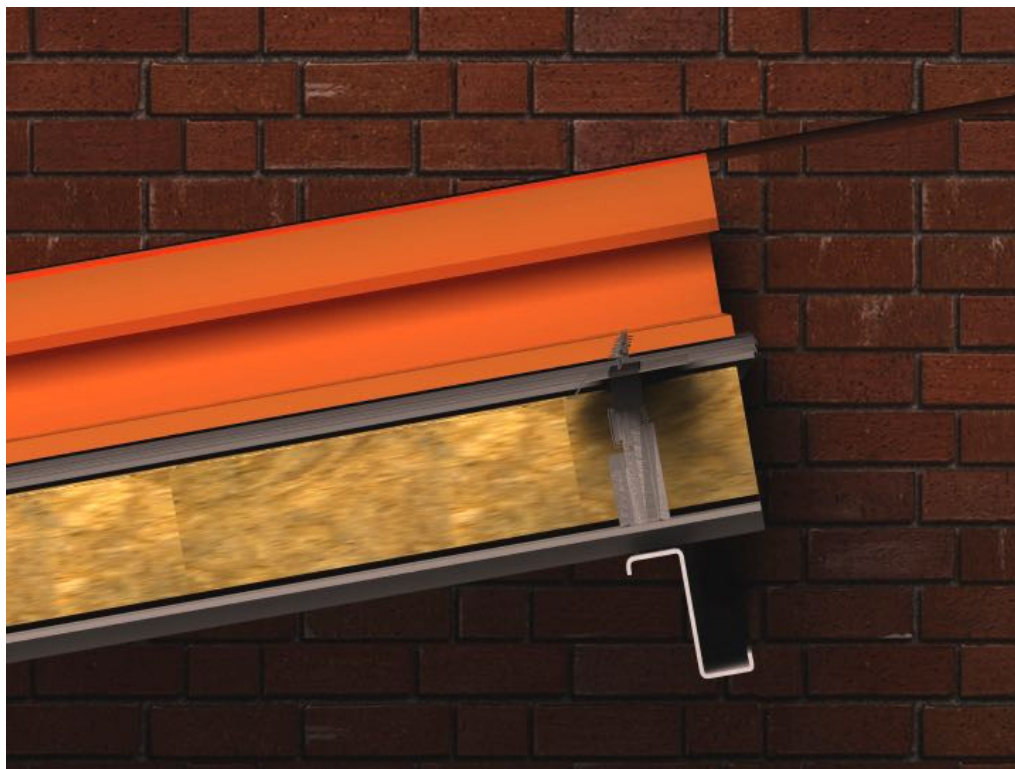
info@mrc-group.co.za
www.mrc-group.co.za



EXCELLENCE IN CONSTRUCTING PERIMETER DETAILING - SIDEWALL



Illustrations showing a brick wall up-stand however the principles apply to whatever materials are used.



JOHANNESBURG – DURBAN – CAPE TOWN

For project specific specifications, CAD Details, Samples or technical assistance please contact our technical department on +27 (0) 861 672 476 or refer to our Technical Brochure available on www.mrc-group.co.za

All Information correct as of the date this document was created 01 April 2015.

© Copyright 2015 MRC GROUP Copying or reproduction of these material are strictly prohibited

Reference number: MRC/FR/SF/PDS/BU/001

THE FERRUM RANGE

Excellence in Metal
Roofing & Cladding

info@mrc-group.co.za
www.mrc-group.co.za



EXCELLENCE IN CONSTRUCTING PERIMETER DETAILING - SIDEWALL

TECHNICAL DATA FOR CORRECT CONSTRUCTION:

DESIGN OF THE METAL SIDEWALL FLASHING

To determine the overall girth of the barge flashing the following should be considered:-

- Roof Profile
- Roof sheet finishing position
- Depth of the roof construction
- Wind loads, Site location and Environment

A sidewall flashing must use a independent zed support. (Please refer to the barge flashing technical datasheet MRC/FR/SF/PDB/001 for more information on this aspect.)

The depth of the up-stand should be a minimum of 75mm, with the 100mm minimum deep separate counter flashing lapping the up-stand by a minimum of 50mm. The counter flashing should be sealed into the cut channel in the brickwork.

SEALANT TAPE BETWEEN THE ROOF SHEET & THE FLASHING

It is essential to install 1 continuous compressed 8mm diameter continuous self-adhesive butyl tape or impregnated polyurethane foam sealing strip between the zed support and the rib of the 'secret fix' or 'concealed fix' roof system to ensure that wind driven rain does not enter the detail providing a clean, dry and high performing detail.

FIXING THE SIDEWALL FLASHING

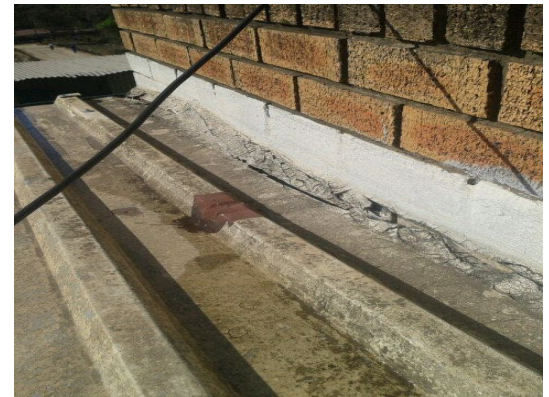
Class 3 or 4 (depending on the location of the site) tapered stitching screw with 16mm diameter aluminum bonded 3mm EPDM washer, at a maximum of 500mm centres.

SYSTEM WARRANTY

Up to 20 year, single source 'Guardian' System Warranty covers Design, Materials, Workmanship & Maintenance.

CAUTIONARY NOTE

For the long term performance of the sidewall detail, it is essential that all components are installed correctly. Should any of the components such as sealant tape, metal counter flashing or zed support be omitted then water will enter the detail.



Failed waterproofing membrane and no metal flashings



Failed metal flashing with waterproofing



Metal sidewall flashing with vertical cladding

ACCREDITATIONS



JOHANNESBURG – DURBAN – CAPE TOWN

For project specific specifications, CAD Details, Samples or technical assistance please contact our technical department on +27 (0) 861 672 476 or refer to our Technical Brochure available on www.mrc-group.co.za

All Information correct as of the date this document was created 01 April 2015.

© Copyright 2015 MRC GROUP Copying or reproduction of these material are strictly prohibited

Reference number: MRC/FR/SF/PDS/BU/001