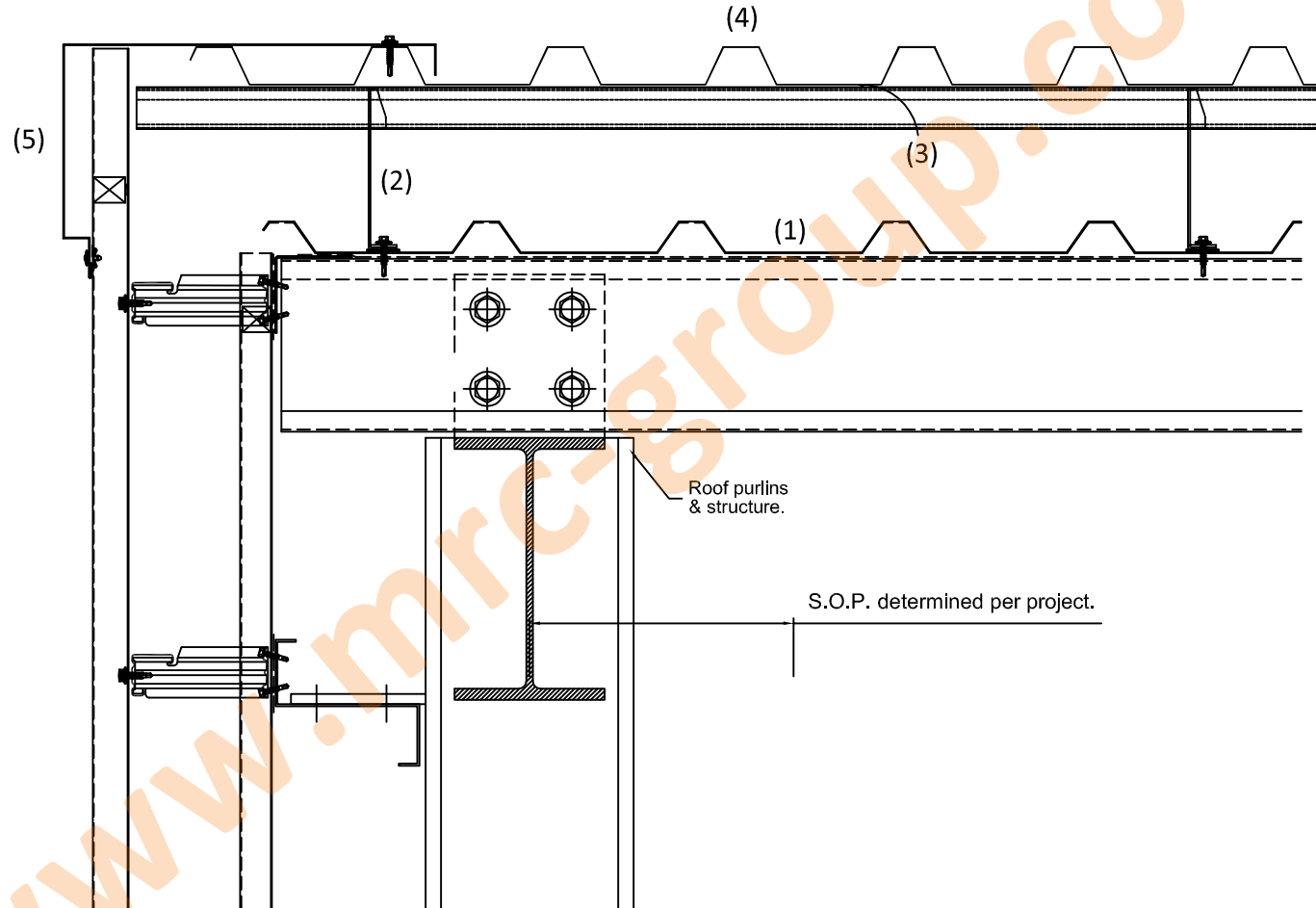


ALL these details to be read in conjunction with Technical Bulletin Reference Number MRC/FR/PF/PDB/BU/001



SYSTEM SPECIFICATION.

- (1) MRC Liner Sheet or existing roof sheeting as per specification.
- (2) Ashgrid Bar & Bracket Spacer Support System with Thermal Pad & Fixings as per specification.
- (3) Optional Thermal Insulation as per specification, if not used then an MRC Breather Membrane to be installed between the Ashgrid and the 'Pierced Fix' Roof Sheet.
- (4) MRC 'Pierced Fix' Roof Sheet as per specification.
- (5) Barge flashing as per specification.

Rev	Date	Initial	Description



MRC Systems (PTY) Ltd
 Offices: Johannesburg, Durban, Cape Town

This drawing is copyright and is issued on the express condition that it is not to be copied or disclosed by or to any unauthorised person or firms without prior consent in writing from MRC Group.

GENERAL NOTES.

- 1). Do not scale from this drawing.
- 2). All dimensions shown on this drawing are in millimetres (mm) and are nominal unless marked.
- 3). Isolate all interfaces between dissimilar materials.
- 4). All details backed by the 'Guardian' System Warranty.

Drawing Title : Barge with Vertical Cladding		Project : MRC Group 'Pierced Fix' Built Up Roof Construction WITH LINER SHEET	
Drawn : MRC	Date : 08/2015	Scale : 1:5 @ A3	Check :
Drawing No. : MRC/FR/PF/PDB/BU/DWG004			Rev :